

Learning and Development in the workplace

What the statistics reveal



Collaborative and responsive to feedback



Acting on feedback & being transparent



Providing micro-data for modelling and analysis



Telling the story – positive or negative



Not preoccupied with our bit of the puzzle



Building trust through results

A social media
post from the
release



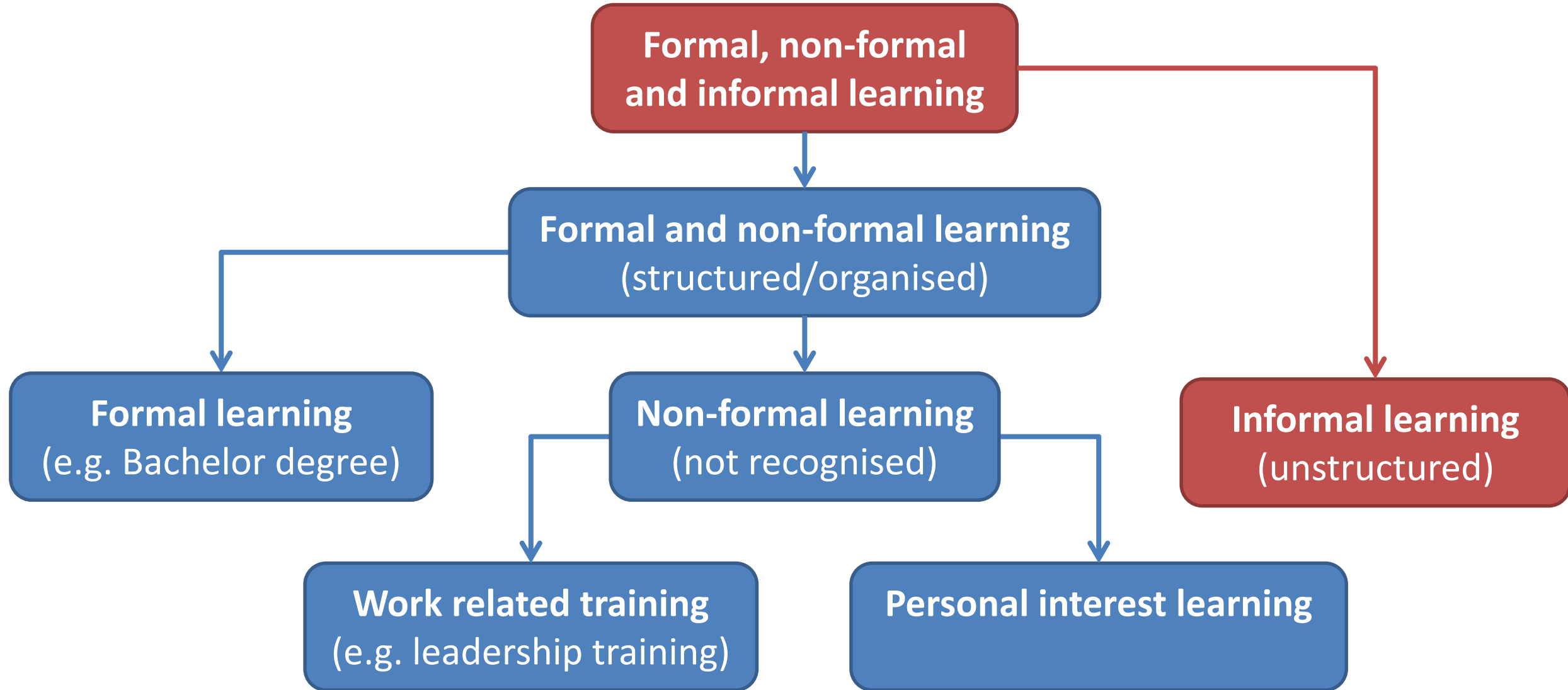
 Australian Bureau of Statistics 4mo

Fewer people are participating in work-related training, our latest data reveals. Participation in work-related training decreased from 27% in 2013 to 22% in 2016-17 for working age Australians, according to the results of the latest Work Related Training and Learning Survey. For more, visit: <http://bit.ly/2BOja7b>



24 Likes · 1 Comment

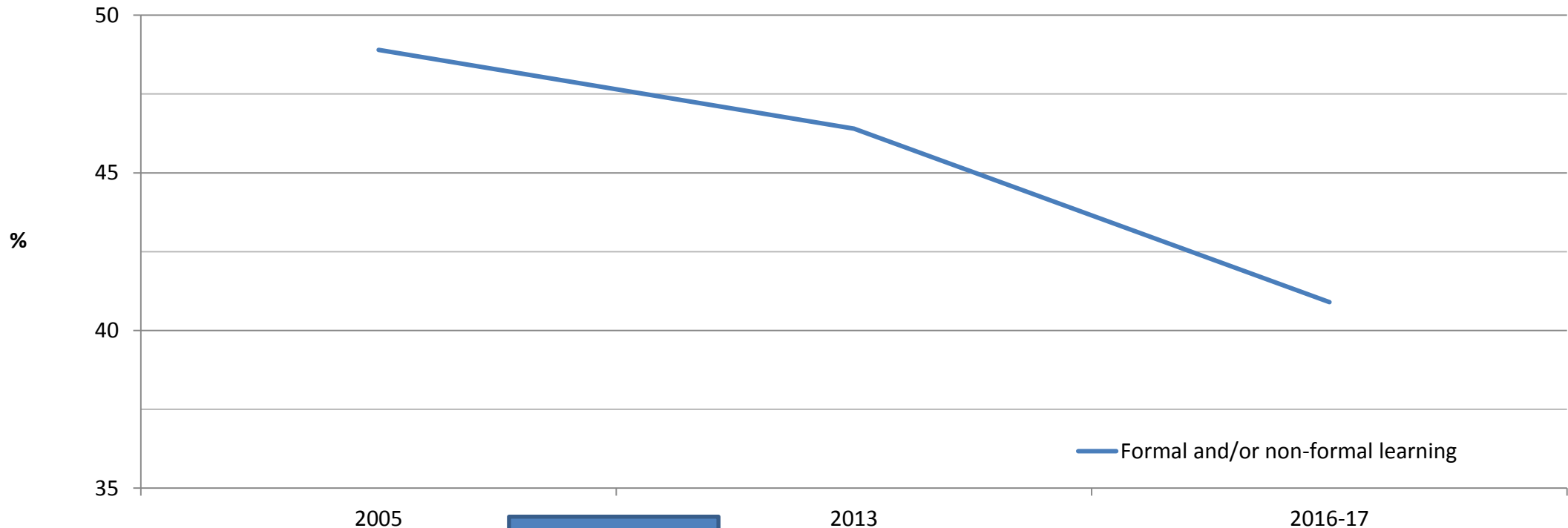
 Like  Comment  Share



Participation is dropping since 2005



Participation in formal and/or non-formal learning by people aged 15-74 years



Source: Survey of Education and Training, 2005

2009 missing?

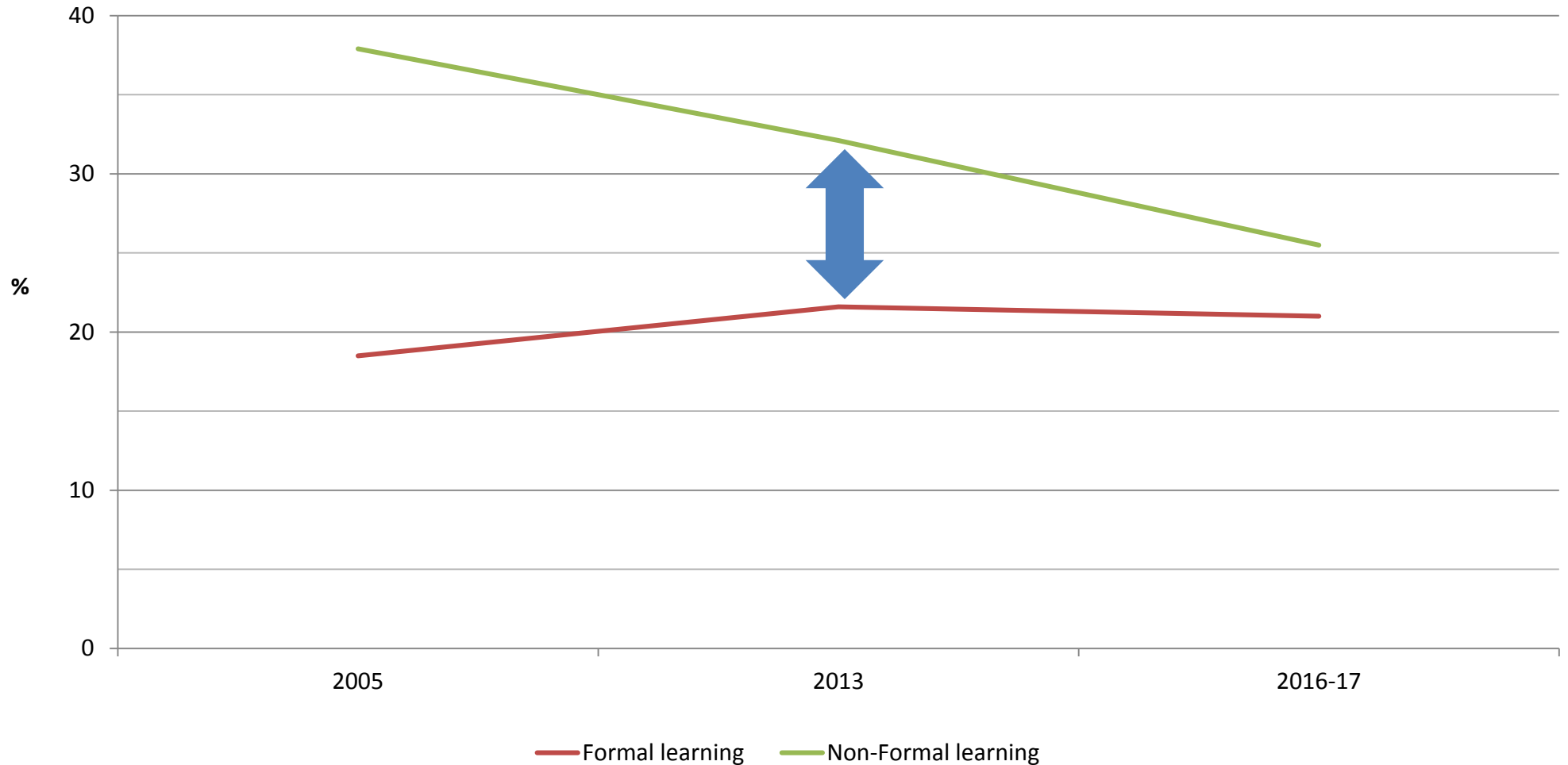
Source: Work-Related Training and Adult Learning, 2013

Source: Work-Related Training and Adult Learning, 2016-17

Since 2005 Formal is steady, Non-formal is falling



Participation in formal vs non-formal learning by people aged 15-74 years



The gap between formal and non-formal learning has fallen.

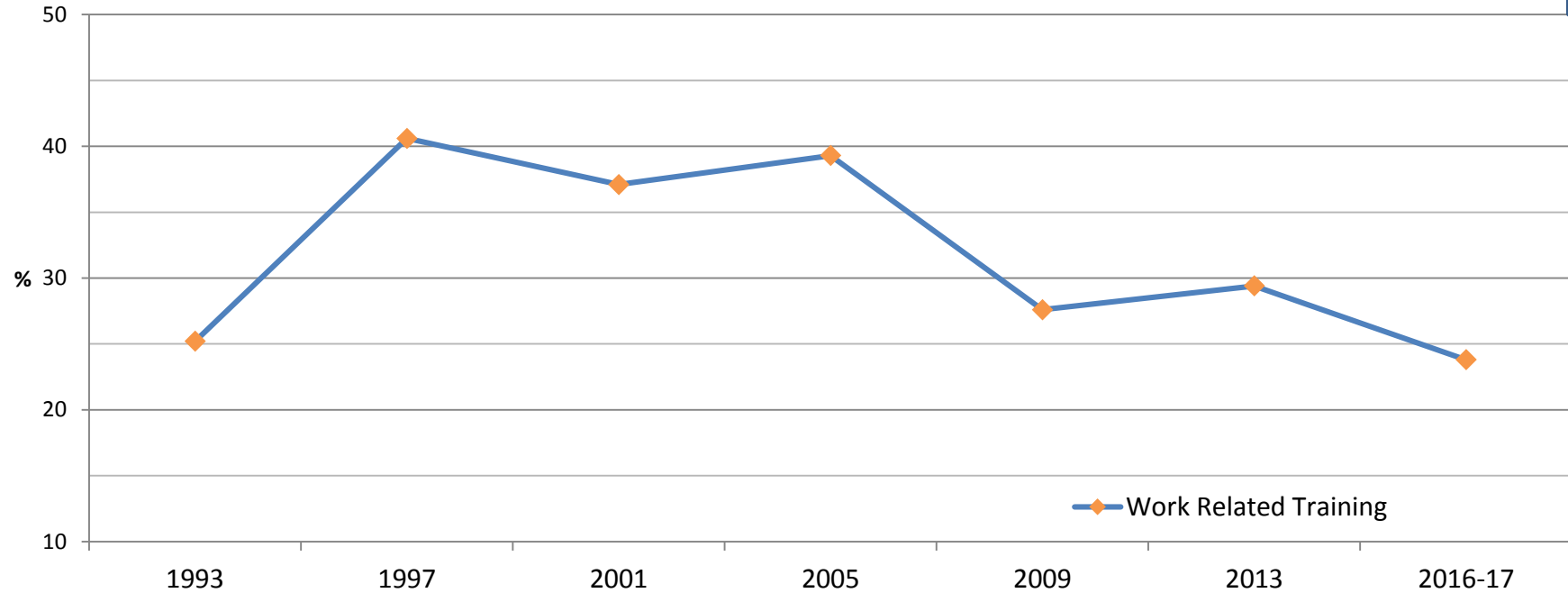
Work related training is also falling since 2005



Participation in Work Related Training by people 15-64 years

Only 15-64, not 15-74

Data from the Survey of Education and Training up to 2009, then the Survey of Work Related Training and Adult Learning

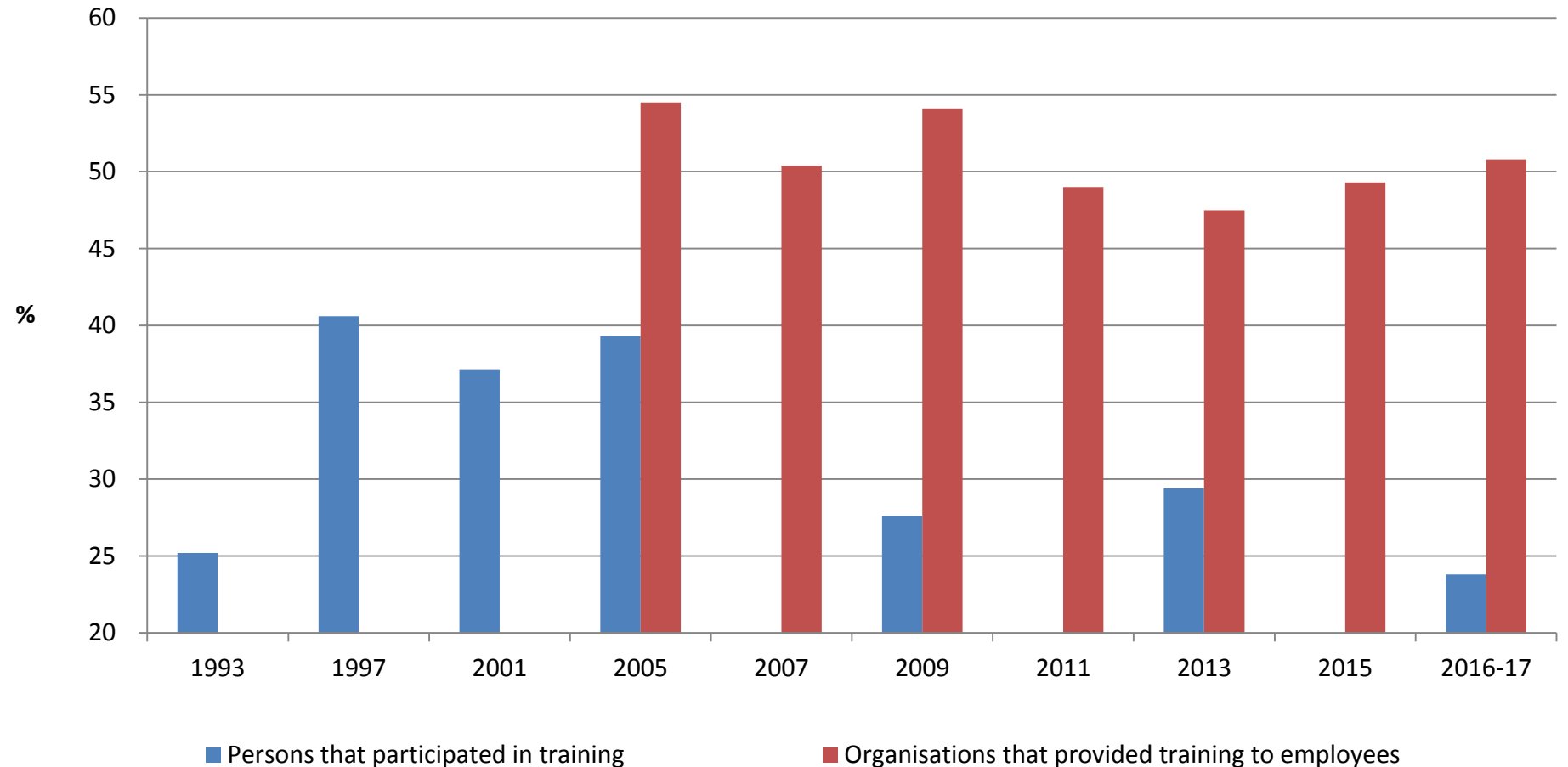


Different questions asked in 2009 which were not comparable to 2005 – **also the GFC happened**

From 2013 the questions were close enough to 2005 to be comparable



Work-Related Training – Persons and Organisations



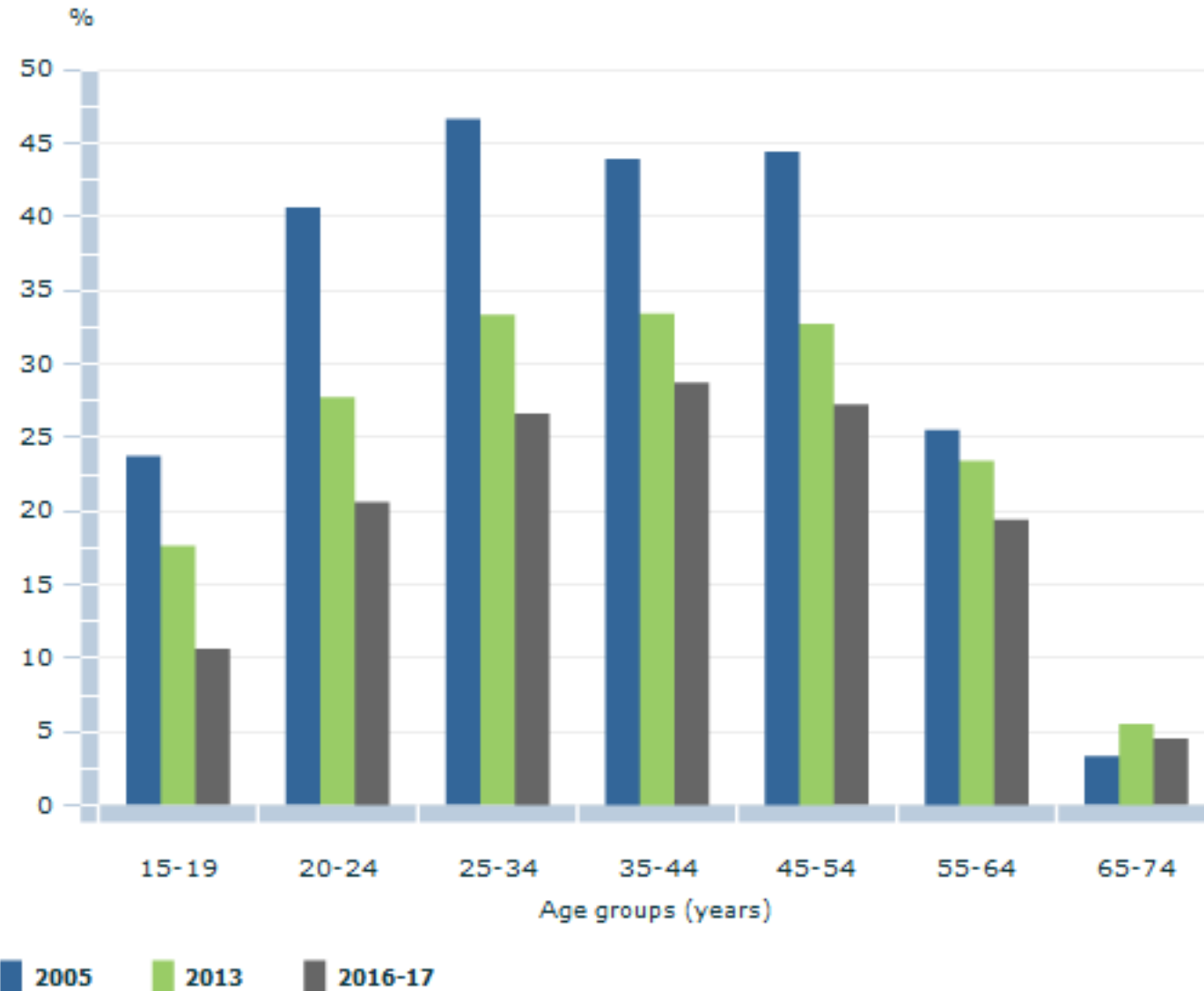
The organisations data is from the Survey of Employer' Use and Views of the VET System in 2017 from the National Centre for Vocational Education Statistics.

Decreasing across most age groups



Lower participation by the youngest and oldest people surveyed

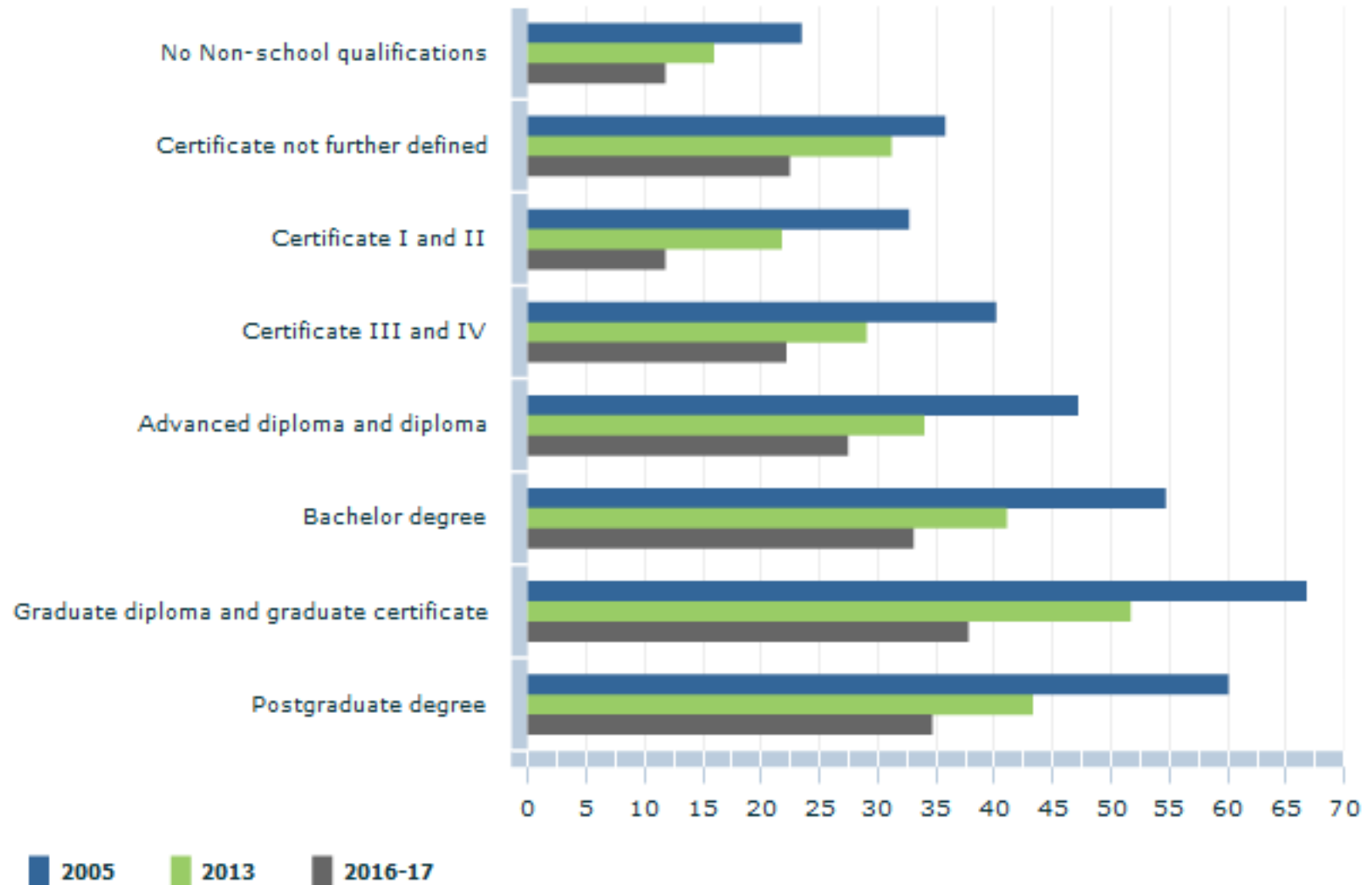
Graph 1 - Participation in work-related training by age groups, 2005, 2013 & 2016-17(a)(b)(c)



Decreasing by levels of highest educational attainment



Graph 5 - Participation in work-related training by non-school qualification, 2005, 2013 & 2016-17(a)(b)(c)(d)



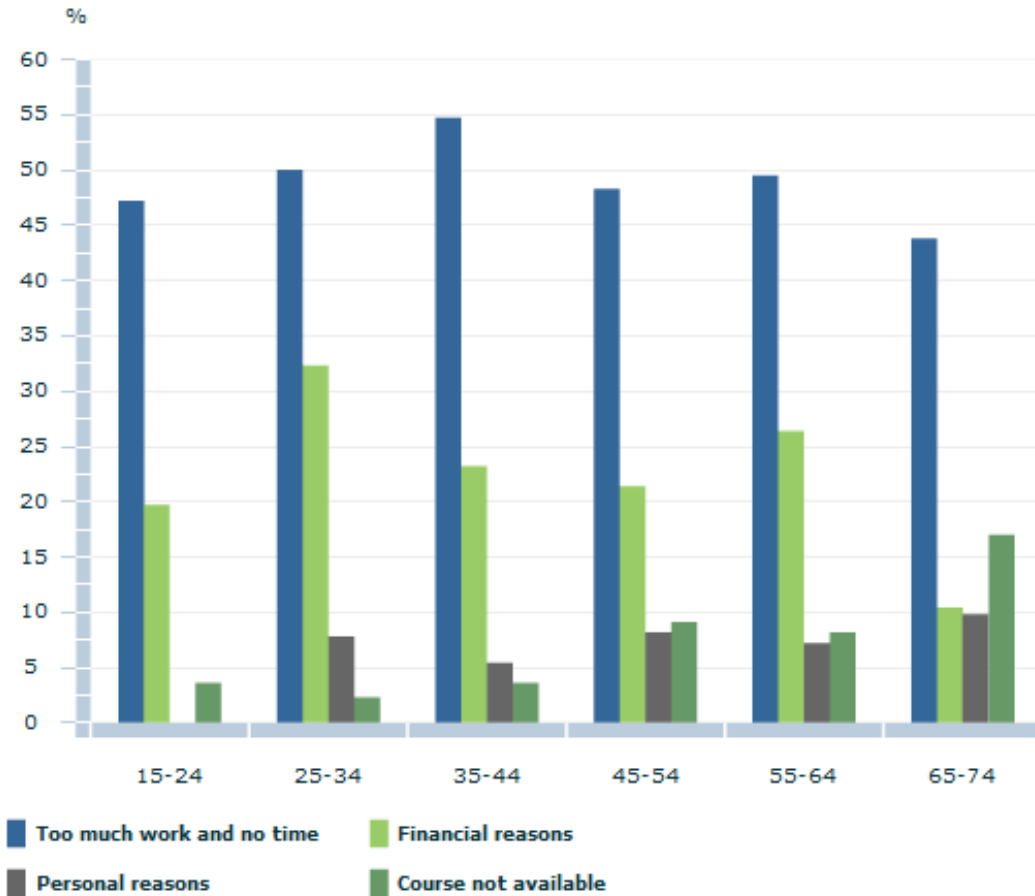
Higher participation by people with higher levels of educational attainment

Barriers to non-formal learning



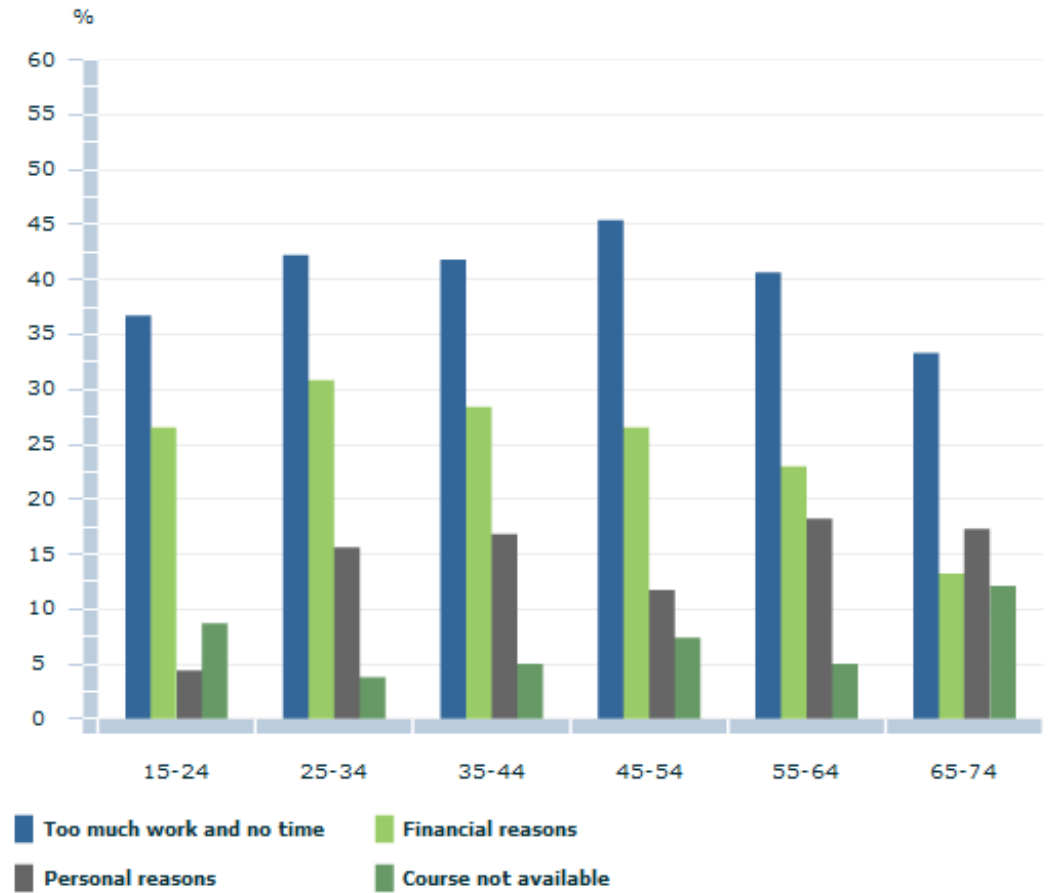
Male

Graph 1 - Reasons for not participating in more non-formal learning by age groups, 2016-17(a)(b)(c)



Female

Graph 1 - Reasons for not participating in more non-formal learning by age groups, 2016-17(a)(b)(c)

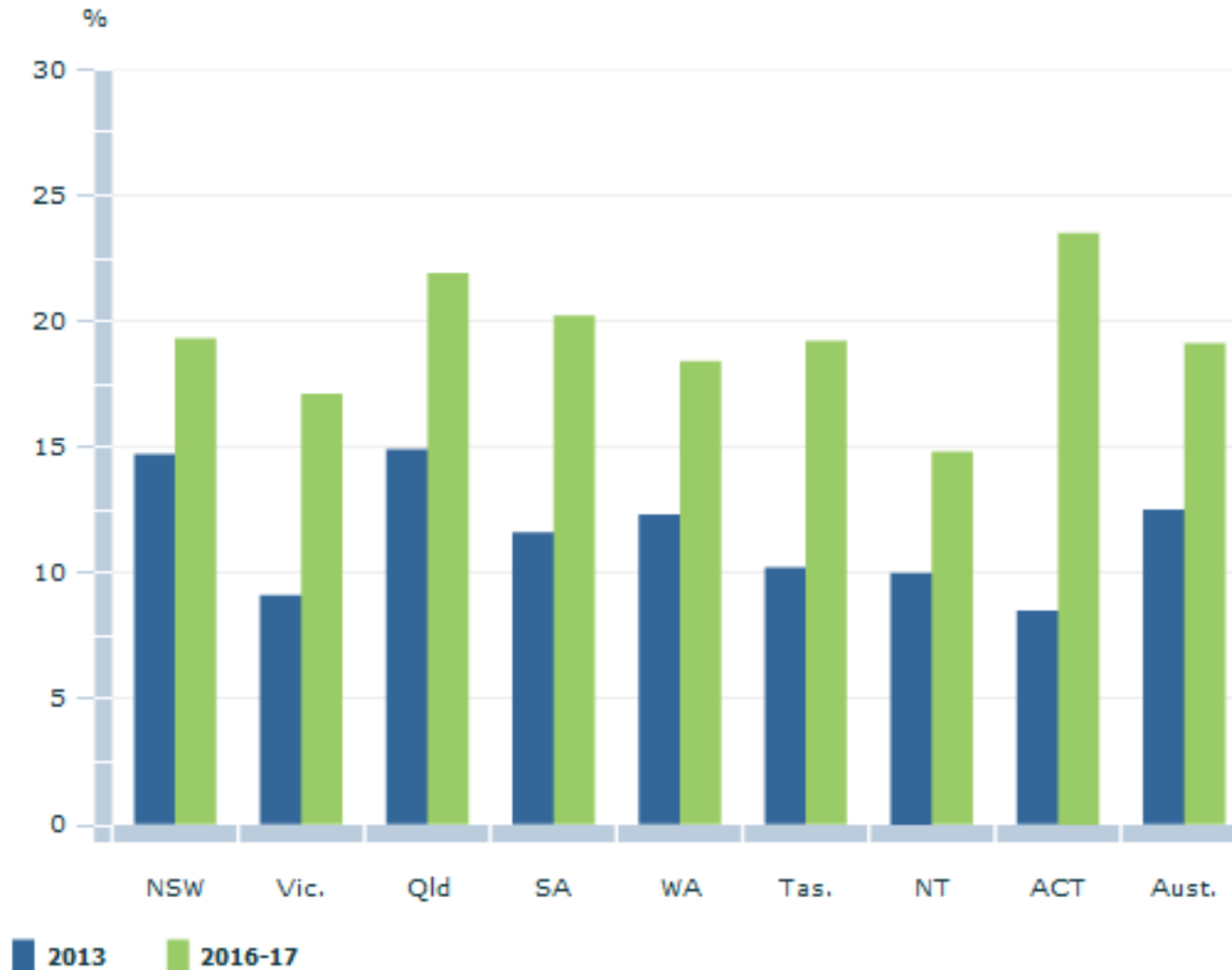


Males are more likely to report not having enough time; while females report personal reasons.

Higher participation in “online” work-related training



Graph 1 - Participation in work-related training by online instruction, states & territories, 2013 & 2016-17(a)(b)(c)(d)



Traditional classroom instruction is still the most common (69%) though lower than 2013 (75%).

Online instruction is catching up, from 13% in 2013 to 19% in 2017.



Questions?

